

## 6<sup>th</sup> Form Preparation work for

# ART

## Natural Form



Read

### Task 1:

Follow the link below and browse a range of resources that will help you prepare you for Art at A Level. Keep this site in mind as it will be handy to revisit every now and then!

[Student art guide](#)

**Time: 30mins**



Watch

### Task 2: Watch Online gallery tours.

Follow the link to find a range of different galleries that you can virtually look around.

<https://www.timeout.com/travel/virtual-museum-tours>

Choose a painting or sculpture that you particularly inspired by. Make a video or write why that piece of art made an impact on you.

**Time: 1hr**



Record

### Task 3: Gather ideas/ inspiration

Create a mood board on powerpoint showing inspiration from nature. Include photographs and artist images.

Add key words to help highlight your focus.

Look below for examples.

**Time: 1hr**



Complete/present

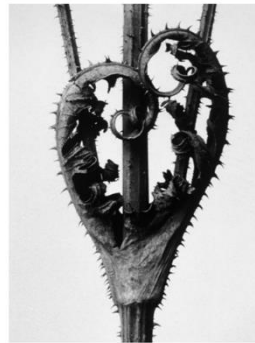
Time: 5-6hrs

### Task 4: Natural form practical tasks

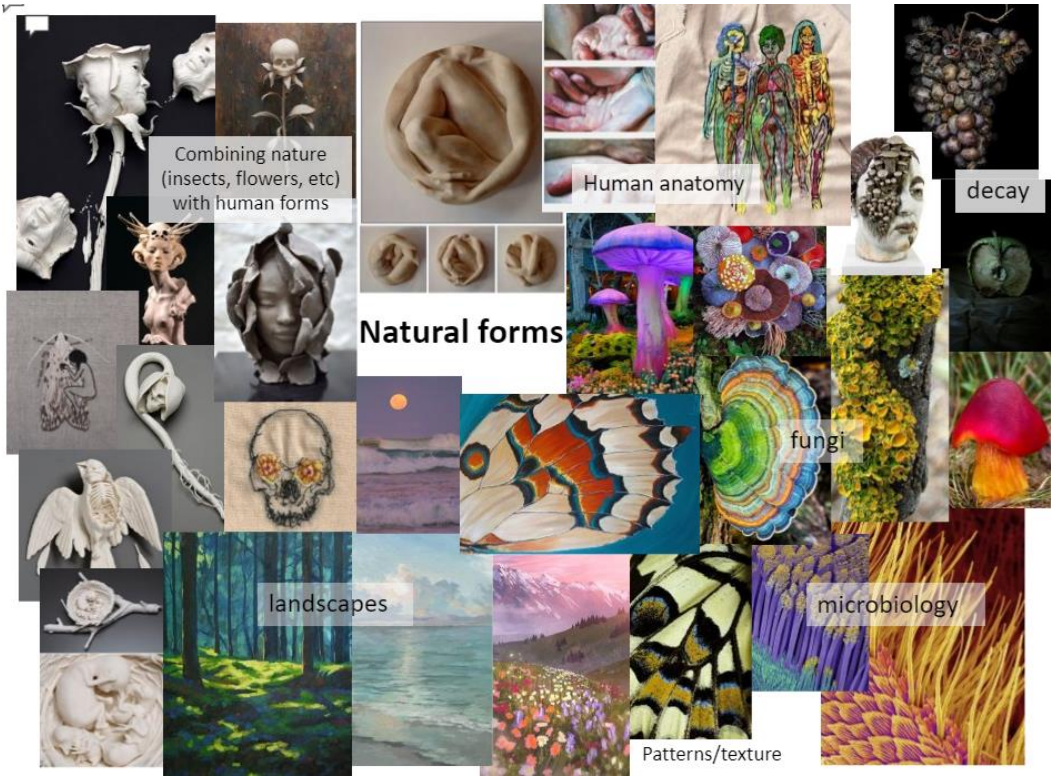
- Research artist Karl Blossfeldt - look at his photography based on nature.
- Take your own photography of seeds, flowers and grasses in the style of Blossfeldt.
- Create several studies from some the objects you have found or from the photographs you have taken. Try to be creative in the way you draw them. Consider using the following materials: pencil, charcoal, biro, coffee, fine liner (add water).
- Research artist Andy Goldsworthy – look at his imagery of Land Art. Create an artist page, selecting images that most influence you. Analyse one image.
- Create your own Land Art inspired by the artwork of Andy Goldsworthy. Take photographs of your work. Be creative. Think about materials you can use. Consider the use of colour, pattern and shape within your Land Art.
- Place your images onto a powerpoint and write an evaluation about your artwork.

Karl Blossfeldt (1865–1932)

Blossfeldt was a self-taught photographer as well as a sculptor, painter, and teacher. He was also an amateur botanist and held a strong belief that forms found in art and architecture could be linked back to specific structures in nature. He focused on taking simple, yet striking monochrome images of plants, flowers and seed heads.



**Artist and imagery inspiration:**



**Natural form - artists**

